



Heated Mats *Melt Snow* for Safer Walkways and Stairs!



Just in Time for Winter Weather, DAK Equipment & Engineering Offers Portable Heated Walkway and Stair Mats

DAK Equipment & Engineering is proud to introduce a new product line that provides you with a safe, clean way to reduce slip-and-fall accidents outside your facility.

Used at Fortune 500 companies, universities and government facilities, these electrically heated walkway and stair mats plug into any standard 120V or 240V outlet and generate enough heat to melt two inches of snow per hour.

The mats come with grommet holes on each side to help secure them in place and are available in multiple sizes to meet your needs.

❁ **Portable—No Expensive Installations**

Designed to lie on top of existing surfaces to provide a clean and safe passageway for foot or wheelchair access

❁ **Safer Walkways and Stairs**

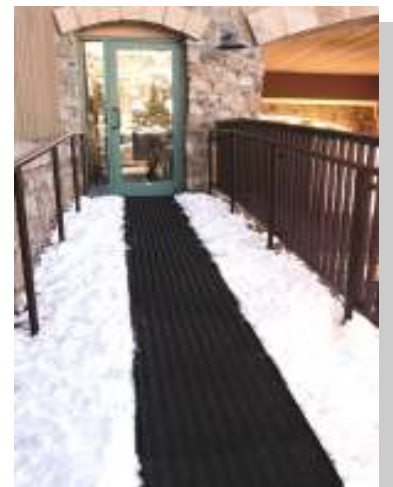
A better solution for slip prevention. By continuously melting snow and ice, the mats keep surfaces clear and safe

❁ **Cleaner**

A better alternative to calcium chloride. No more messy floors or walkways eaten away over time

❁ **Durable**

As durable as automobile tires. Made of an electrically operated heating element sandwiched between two protective surfaces of non-slip rubber, these mats are designed to be left outside for the entire winter season



Call 630-516-1115 or Email info@dakequipment.com to order!



Walkway Product Specifications

Surface

Total Thickness 1/2"
 Grommet Size (Inner Diameter)..... 3/8"
 Material Reinforced SBR Rubber

Heating Element

Voltage..... 120Vac or 240Vac
 Power Density.....38 - 40 Watts/SF
 Snow Melt Rate..... 2" per hour

In-line Safety Device/Power Cord

Service voltage..... 120Vac or 240Vac
 Circuit breaker rating..... 15A
 ELCI trip level.....30mA
 Cord lead length..... 6 ft
 Cord gauge..... 14/3 SJTW

Size	Volt	Watts	Amps	Weight	Price
24" x 5'	120	300	2.5	20 lbs.	\$370.00
24" x 5'	240	300	1.3	20 lbs.	\$380.00
24" x 10'	120	633	5.3	39 lbs.	\$725.00
24" x 10'	240	633	2.6	39 lbs.	\$730.00
24" x 15'	120	967	8.1	59 lbs.	\$1,125.00
24" x 15'	240	967	4.0	59 lbs.	\$1,150.00
24" x 20'	120	1,300	10.8	78 lbs.	\$1,490.00
24" x 20'	240	1,300	5.4	78 lbs.	\$1,525.00
36" x 5'	120	480	4.0	33 lbs.	\$555.00
36" x 5'	240	480	2.0	33 lbs.	\$570.00
36" x 10'	120	1,013	8.4	66 lbs.	\$1,125.00
36" x 10'	240	1,013	4.2	66 lbs.	\$1,150.00
36" x 15'	120	1,547	12.9	75 lbs.	\$1,660.00
36" x 15'	240	1,547	6.4	75 lbs.	\$1,710.00
36" x 20'	240	2,080	8.7	100 lbs.	\$2,275.00
48" x 6'	120	807	6.7	60 lbs.	\$960.00
48" x 6'	240	807	3.4	60 lbs.	\$985.00



Stair Product Specifications

Surface

Total Thickness..... 1/2"
 Grommet Size (Inner Diameter)..... 3/8"
 Material..... Reinforced SBR Rubber

Heating Element

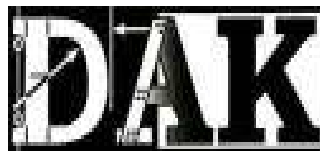
Voltage..... 120Vac or 240Vac
 Power Density..... 37 Watts/SF
 Snow Melt Rate..... 2" per hour

In-line Safety Device/Power Cord

Service voltage..... 120Vac or 240Vac
 Circuit breaker rating..... 15A
 ELCI trip level.....30mA
 Cord lead length..... 6 ft
 Cord length between stairs..... 18"
 Cord gauge..... 14/3 SJTW

Size	Volt	Watts	Amps	Weight	Price
11" x 36"	120	67	0.6	6 lbs.	\$160.00
11" x 36"	240	67	0.3	6 lbs.	\$165.00
11" x 48"	120	93	0.8	8 lbs.	\$220.00
11" x 48"	240	93	0.4	8 lbs.	\$225.00
11" x 60"	120	120	1.0	12 lbs.	\$245.00
11" x 60"	240	120	0.5	12 lbs.	\$250.00
11" x 72"	120	147	1.2	13 lbs.	\$275.00
11" x 72"	240	147	0.6	13 lbs.	\$280.00
11" x 84"	120	173	1.4	14 lbs.	\$300.00
11" x 84"	240	173	0.7	14 lbs.	\$310.00
11" x 96"	120	200	1.7	15 lbs.	\$335.00
11" x 96"	240	200	0.8	15 lbs.	\$345.00

Price and specifications per individual Stair Mat



Call
630-516-1115
 to Order!